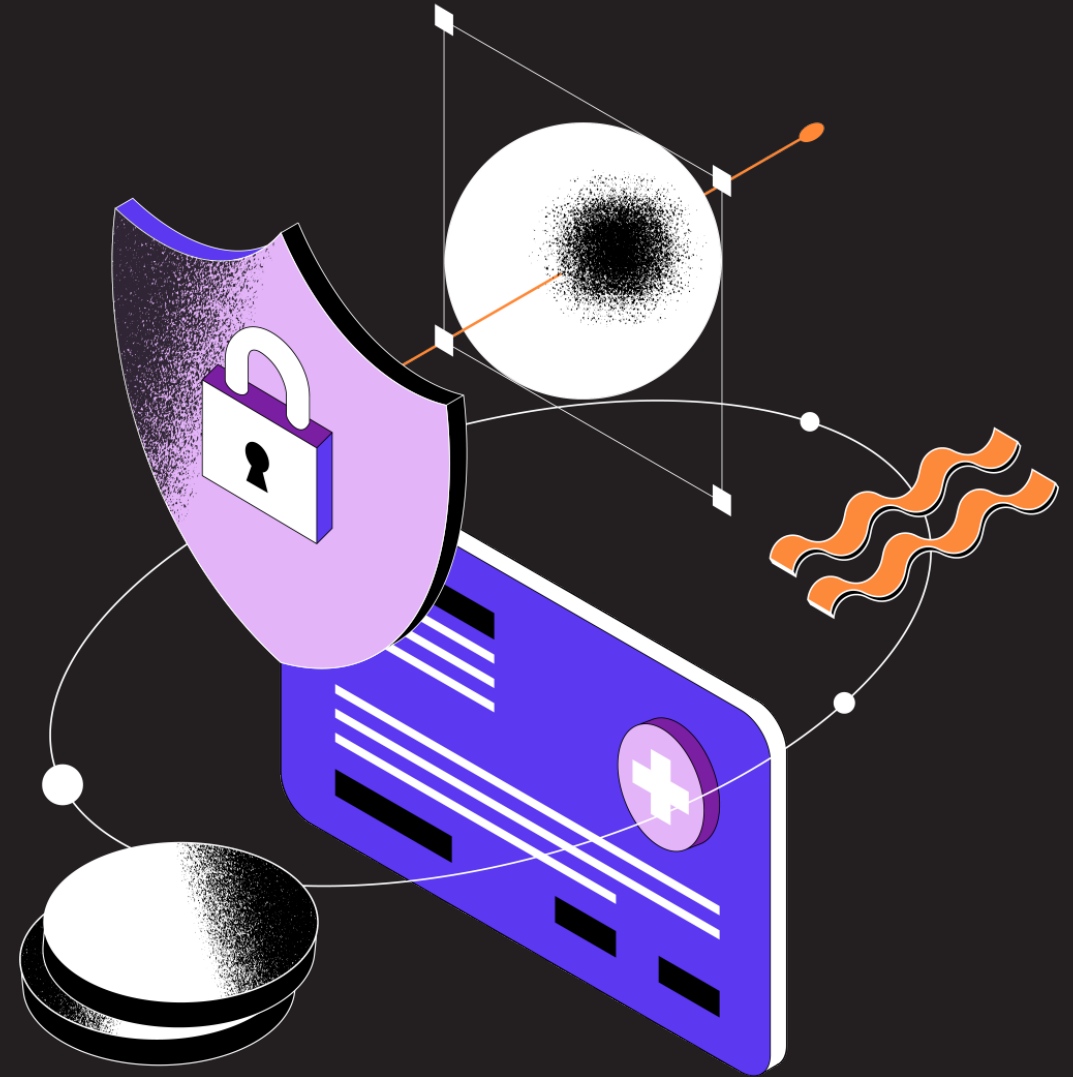


broadbench

Your Guide To Relevant Life Insurance

A Death-In-Service Benefit
For Business Owners And
Their Employees



Contents

Why Consider Life Insurance?	3	Why Broadbench?	8
What Is Relevant Life Insurance?	4	4 Simple Steps	9
The Important Stuff	5-6	Our Services	10
Protect What You Love	7	What Our Customers Say	11

Why Consider Life Insurance?

Protecting those you love when you're no longer around isn't easy, but it could be one of the most important conversations you have. Looking ahead gives you peace of mind that the people who matter most will be provided for. For that reason alone, purchasing life insurance is an important part of your personal finance plan.

Simply put, life insurance provides your loved ones with a one-off payment (or monthly payments) should you pass away. It means your family won't face the worry of paying bills, keeping a roof over their head or putting food on the table and provides you with control over how your finances will be managed after your death.

Furthermore, a standard life insurance policy can be enhanced to become more tax-efficient if you're a contractor or director running a limited company – this is what's known as Relevant Life Insurance.



What Is Relevant Life Insurance?

Take control of your protection by moving your monthly life insurance payments from your pocket to your limited company expenses. It's very tax efficient!

Relevant Life Insurance is a type of life insurance that is designed specifically for business owners and company directors. It's a tax-efficient way for companies to provide death-in-service benefits to its employees.

Instead of providing group life cover, the employer can provide a Relevant Life Policy on an individual basis.

Why Is It Called "Relevant"?

Because the benefits paid out are relevant to the employee and his or her family, rather than to the employer. The premiums are paid by the employer, but they are treated as a business expense and are therefore tax-deductible.

The death benefit is paid out to the employee's nominated beneficiaries and is generally free from inheritance tax.



The Important Stuff

Reasons To Choose Relevant Life Insurance

1. Death-In-Service Benefit

Relevant Life Insurance gives business owners and their employees a fantastic death-in-service benefit, keeping your team engaged and feeling valued.

2. You See Immediate Savings

By paying for life insurance through your business, you can reduce your personal outgoings by hundreds if not thousands of pounds per year.

3. There's No Impact On Existing Benefits

Relevant Life Insurance isn't treated as a benefit-in-kind.

4. NI Doesn't Apply

Relevant Life Insurance premiums aren't subject to National Insurance payments.

5. You Can Claim Tax Relief

Your business can claim Corporation Tax Relief on your monthly Relevant Life Insurance premiums.

6. It's A Flexible, Tax-Free Payout

There is no tax to be paid on Relevant Life Insurance benefits and no restriction as to what the payout is used for.

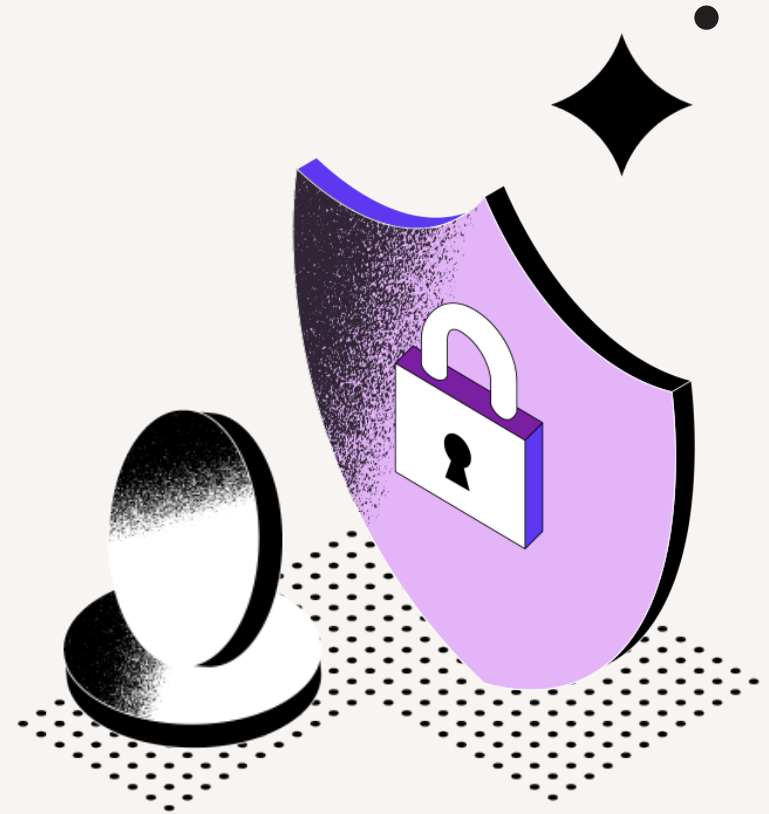
All statements concerning the tax treatment of products and their benefits are based on our understanding of current tax law and HM Revenue and Customs' practice. Levels and bases of tax relief are subject to change.

The Important Stuff

Your Broadbench adviser will be able to walk you through the specifics of the policy you choose, however, there are some details you should be aware of when choosing Relevant Life Insurance.

- You are only covered for the duration of the policy.
- The cover only lasts while you keep up your monthly payments.
- You have to be a salaried director or an employee of a limited company and resident in the UK.
- Traditional life insurance can be subject to inheritance tax. Relevant Life Insurance, when set up as a trust, means there will likely be no tax surprises in the lump sum you intend to leave your loved ones.
- There is no benefit in kind charge.
- The personal savings to you (by moving the cost of your personal life cover to your company expenses) could be significant and help to pay for the holiday, car or house extension.
- You should regularly review your cover, especially if your circumstances change.

In terms of costs, Relevant Life Insurance premiums are generally lower than traditional group life insurance policies, making it a cost-effective option for both employers and employees.



Protect What You Love

Relevant Life Insurance Can Support You And Your Loved Ones In A Number Of Ways

Getting this right will give you the peace of mind that your family will be covered when you're no longer around to provide an income.

1. Mortgage Protection

Overwhelmingly, clients come to us at Broadbench looking to secure life insurance that simply covers the outstanding amount left on their mortgage. However, it's vital to consider any other debts in addition to your mortgage when establishing the amount of cover to secure.

2. Paying Off Outstanding Debt

Many believe that their debts cease to exist when they do, but the reality is very different. Assuming their assets don't exceed them, any debt is handed over to their next of kin. That's why, in order to truly protect what you love, it's important to consider debts beyond your mortgage.

3. Income Protection

Keeping your family protected after your death is about more than leaving them debt free. It's also important to consider the loss of income they will suffer when you're no longer around. What changes would that mean to your family's lifestyle?

4. The Cost Of Raising Children

The cost of supporting a family and bringing up children is also something many people overlook when considering life insurance. Research conducted in 2021 by the Child Poverty Action Group found that the basic cost of raising a child to age 18, excluding housing, childcare and council tax, is £160,692 for a couple. £193,801 for a single parent or guardian. And that research only accounts for the basic cost of raising a child. What about the lifestyle your family is accustomed to?

Why Broadbench?

Many of us decide on what insurance to go for (whether it's for your car, your house or your life) that fits the monthly premium we want to pay. Of course, you could go to a price comparison site and very quickly find the cheapest quote on the market, but would it be the best solution for you and your family?

Our advisers have the skills and knowledge to offer you bespoke and impartial advice, taking in a holistic understanding of your circumstances and combining it with a deep knowledge of what different providers offer. Not only that, but they know how to quickly navigate the insurance minefield and set up exactly what you require, taking the hassle out of your hands.

The Benefits Of Using Broadbench:

- Bespoke and impartial advice.
- You deal with a human, not a computer.
- The hassle is taken out of your hands.
- Access to expert market knowledge.



4 Simple Steps

How We Make Your Life More Manageable

1. We Listen To You

Getting to know you, your requirements and how you work enables us to find the perfect products for your needs.

2. We Study The Market

Leveraging our network of lenders and insurers, we scour the intermediary market to find the best options and dig into the detail to make sure they're the right fit for you.

3. We Do The Boring Bits

You just want to sign up with the right provider, not be buried in forms and red tape. That's why we run you through the details and fill out all the paperwork ahead of your final approval.

4. We Stay In Touch

We don't just recommend and walk away. We'll regularly check whether your product is right for your current circumstances and, if not, find a new one that is.

Our Services

Business Protection

- Relevant Life Insurance
- Key Person Insurance
- Executive Income Protection
- Business Healthcare
- Shareholder Protection
- Business Loan Protection
- Professional Indemnity

Personal Protection

- Life Insurance
- Whole Of Life
- Critical Illness Insurance
- Private Healthcare
- Personal Income Protection
- Buildings & Contents

Mortgages

- First Time Buyer
- Home Mover
- Remortgages
- Buy to Let

What Our Customers Say

We are passionate about our customers and providing the very best service. Take a look at our latest reviews on Trustpilot.

“Great service! – I've been using these guys for years for my mortgage options as a contractor. Great service and knowledge. I've also got a few other products with them. Looking forward to many more years of great service.”

★★★★★ by Alexander Delaney

Rated 4.9 / 5 | 384 reviews

★ Trustpilot

“Brilliant, as always – I'm a returning client of Broadbench, and I'm always impressed by their professionalism. Mike was incredibly helpful, and knowledgeable, and made the entire process smooth and stress-free. He took the time to ...

★★★★★ by Ali

Rated 4.9 / 5 | 384 reviews

★ Trustpilot

“Highly reccommend! Extremely helpful and took the time to explain and give all options for life insurance and income protection. Made the whole process very quick and smooth.”

★★★★★ by George Gordon

Rated 4.9 / 5 | 384 reviews

★ Trustpilot

“Extremely helpful organised and knowledgeable. All the information required was conveyed concisely in a personable manner.”

★★★★★ by Liam

Rated 4.9 / 5 | 384 reviews

★ Trustpilot

“Contractor guidance. We have used the services of Broadbench for many years now and have always found the team to be highly professional. As a contractor, Tom and Emily have been excellent at securing the best deals for my ...

★★★★★ by MJ

Rated 4.9 / 5 | 384 reviews

★ Trustpilot

“Exceptional service and advice from Broadbench. I really appreciate the fantastic independent advise given and effort to get the positive outcomes in setting up the right Insurance policies for me and my business. Would recommend Broadbench ...

★★★★★ by Steve

Rated 4.9 / 5 | 384 reviews

★ Trustpilot

broadbench

Find Out More

advice@broadbench.co.uk

01202 700053



broadbench.co.uk



Broadbench Ltd is authorised and regulated by the Financial Conduct Authority number 590288 in respect of mortgage and insurance mediation activities only. Registered address: 167-169 Great Portland Street, 5th Floor, London, W1W 5PF. The company is registered in the UK, number 07491324. © Broadbench 2024

Document accurate at the time of creation 19.11.2024